

Huawei NetEngine AR6710-L Series Enterprise Router

Data Sheet

NetEngine AR6710-L series enterprise routers are fixed routers designed by Huawei for the headquarters and branches of small or midsize enterprises. These routers offer a wide range of service features such as SD-WAN, routing, switching, and security, and come equipped with various interface types such as Ethernet, LTE/5G, E1, POS/CPOS, and GPON/xGSPON, which allows them to deliver high performance and diversified services to meet the needs of different enterprises.


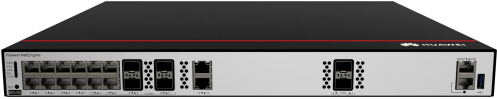


Product Overview

Huawei next-generation NetEngine AR6710-L series enterprise routers deliver superior performance particularly when dealing with diverse and cloud-based services.

Huawei NetEngine AR6710-L series enterprise routers are ideal for the headquarters and branches of small or midsize enterprises and can be deployed at the network egress as needed. This series consists of models such as NetEngine AR6710-L8T3TS1X2, NetEngine AR6710-L8T3TS1X2-T, NetEngine AR6710-L14T2X4, NetEngine AR6710-L26T2X4, NetEngine AR6710-L26T2X4-T, NetEngine AR6710-L50T2X4, and NetEngine AR6710-L50T2X4-T, which can meet networking requirements of enterprises of different scales. In addition, they offer a variety of interface cards, such as Ethernet, LTE, E1, and POS/CPOS, to help extend enterprise services.

- **Rich access capability:** Ethernet, LTE/5G (5G cards and 5G RUs), E1, POS/CPOS, and GPON/xGSPON.
- **High-quality SD-WAN:** fast ZTP, all-scenario networking architecture, application quality-based intelligent traffic steering, and WAN optimization, helping deliver ultimate service experience.
- **Superior performance:** supports GE/10GE optical interface cards; high-speed access of 5G RUs and service cards, built-in WAC capable of unified management of Wi-Fi 5/6/7 devices; seamless roaming between its connected APs.
- **AI:** bandwidth planning, network orchestration, policy recommendation, in-band flow measurement, and automatic fault locating.
- **Security protection:** integrates NGFW capabilities, offering multi-dimensional security policies, ASPF, application recognition and control, IPS, URL filtering, Antivirus and SSL-encrypted traffic detection, signature database and antivirus database update, and interconnection with third-party SSE security clouds, supports MACsec* to ensure end-to-end link security on the LAN side.
- **Reliability:** carrier-class hardware reliability, network-level high reliability, fast service fault recovery, and hot swapping supported.
- **Easy O&M and management:** single-site ZTP within 10 minutes, batch site replication, SD-Branch LAN/WAN converged management, 5G RU and switch RU plug-and-play, digital map, visualized application quality and bandwidth, rights- and domain-based management, diversified alarm and log management methods, and report generation.

*: The MACsec function requires the SIC-2X2S-V2 card.

 <p>NetEngine AR6710-L8T3TS1X2 NetEngine AR6710-L8T3TS1X2-T</p>	<ul style="list-style-type: none"> • Fixed WAN ports: 2 x GE Combo, 1 x 10GE optical (All WAN ports can be switched to LAN ports) • Fixed LAN ports: 1 x GE Combo, 8 x GE electrical (All LAN ports can be switched to WAN ports) • 2 x SIC card • Dimensions (H x W x D): 44.4 mm x 442 mm x 220.4 mm
 <p>NetEngine AR6710-L14T2X4</p>	<ul style="list-style-type: none"> • Fixed WAN ports: 2 x GE electrical, 2 x 10GE optical (All WAN ports can be switched to LAN ports) • Fixed LAN ports: 4 x GE Combo, 8 x GE electrical (All LAN ports can be switched to WAN ports) • 4 x SIC card • Dimensions (H x W x D): 43.6 mm x 442.0 mm x 420 mm
 <p>NetEngine AR6710-L26T2X4 NetEngine AR6710-L26T2X4-T</p>	<ul style="list-style-type: none"> • Fixed WAN ports: 2 x GE electrical, 2 x 10GE optical (All WAN ports can be switched to LAN ports) • Fixed LAN ports: 24 x GE electrical (All LAN ports can be switched to WAN ports) • 4 x SIC card • Dimensions (H x W x D): 44.4 mm x 442.0 mm x 420.0 mm
 <p>NetEngine AR6710-L50T2X4 NetEngine AR6710-L50T2X4-T</p>	<ul style="list-style-type: none"> • Fixed WAN ports: 2 x GE electrical, 2 x 10GE optical (All WAN ports can be switched to LAN ports) • Fixed LAN ports: 48 x GE electrical (All LAN ports can be switched to WAN ports) • 4 x SIC card • Dimensions (H x W x D): 44.4 mm x 442.0 mm x 420.0 mm

Features and Highlights

Features and Highlights of NetEngine AR6710-L

Service Requirement	Feature and Highlight
High performance	<ul style="list-style-type: none"> • Integrates the ARM multi-core processor, hardware encryption/decryption engine, hardware TM engine, and hardware FEC codec engine, based on the self-developed SOC chip architecture. • Offers industry-leading performance, ensuring a low latency for mission-critical services. • Comes equipped with a high-performance multi-core processor that supports high-speed WAN connections and powerful route computing, improving L4–L7 service processing efficiency.
High reliability	<ul style="list-style-type: none"> • Provides backup links for enterprise services, enhancing service access reliability. • Detects link faults and completes route convergence in milliseconds, greatly shortening the

Service Requirement	Feature and Highlight
	service interruption time.
Easy O&M	<ul style="list-style-type: none"> • Supports on-premises and cloud-based management by iMaster NCE-Campus using various protocols, such as NETCONF and SNMP, and high-performance data collection through telemetry. These help simplify network deployment, visualize O&M, and reduce OPEX.
SD-WAN	<ul style="list-style-type: none"> • Is ideal for the SD-WAN solution to build cost-effective and business-friendly connections over the Internet. • Supports application identification and link quality-based intelligent traffic steering, guaranteeing the experience of key applications. • Supports multi-link routing and end-to-end IPsec encryption plus reliable devices, ensuring secure service transmission.
Architecture innovation	<ul style="list-style-type: none"> • On-demand LAN port extension: The network structure is simplified from three layers to two layers. Switch RUs can be managed as logical ports of ARs on iMaster NCE or through the CLI. • 5G RU: 5G RUs are managed by the AR as cellular interfaces, and can be monitored and managed on iMaster NCE. • Built-in WAC capable of unified management of Wi-Fi 5/6/7 devices; seamless roaming between its connected APs.

Product Specifications

Features and Values of Huawei NetEngine AR6710-L Series

Specifications	NetEngine AR6710-L26T2X4	NetEngine AR6710-L50T2X4	NetEngine AR6710-L8T3TS1X2	NetEngine AR6710-L14T2X4
	NetEngine AR6710-L26T2X4-T	NetEngine AR6710-L50T2X4-T	NetEngine AR6710-L8T3TS1X2-T	
System Parameters				
Forwarding performance (NAT+ACL+QoS, IMIX)	3.2 Gbps	3.2 Gbps	2 Gbps	4 Gbps
IPsec performance (IMIX)	1.6 Gbps	1.6 Gbps	1.6 Gbps	2.5 Gbps
IPsec performance (512 bytes)	2 Gbps	2 Gbps	2 Gbps	2.8 Gbps
SD-WAN IPsec performance* (IMIX)	2 Gbps	2 Gbps	2 Gbps	3 Gbps
SD-WAN IPsec performance* (512)	2.6 Gbps	2.6 Gbps	2.6 Gbps	4 Gbps

Specifications	NetEngine AR6710-L26T2X4 NetEngine AR6710-L26T2X4-T	NetEngine AR6710-L50T2X4 NetEngine AR6710-L50T2X4-T	NetEngine AR6710-L8T3TS1X2 NetEngine AR6710-L8T3TS1X2-T	NetEngine AR6710-L14T2X4
bytes)				
SD-WAN performance** (IMIX)	1.5 Gbps	1.5 Gbps	1.5 Gbps	2.5 Gbps
SD-WAN performance** (512 bytes)	2.2 Gbps	2.2 Gbps	2.2 Gbps	3.2 Gbps
SD-WAN typical performance** (IMIX)	1.2 Gbps	1.2 Gbps	1.2 Gbps	1.8 Gbps
SD-WAN typical performance** (512 bytes)	1.4 Gbps	1.4 Gbps	1.4 Gbps	2 Gbps
Fixed WAN ports	2 x 10GE optical, 2 x GE electrical (All WAN ports can be switched to LAN ports)		1 x 10GE optical + 2 x GE Combo (All WAN ports can be switched to LAN ports)	2 x 10GE optical + 2 x GE electrical (All WAN ports can be switched to LAN ports)
Fixed LAN ports	24 x GE electrical (All WAN ports can be switched to LAN ports)	48 x GE electrical (All WAN ports can be switched to LAN ports)	1 x GE Combo + 8 x GE electrical (All WAN ports can be switched to LAN ports)	4 x GE Combo + 8 x GE electrical (All WAN ports can be switched to LAN ports)
5G RU	Supported			
Switch RU	Supported			
WAC(Number of managed APs, default/maximum***)	32/128			
SIC slot	4 x SIC		2 x SIC	4 x SIC
WSIC slot (default/maximum****)	0/2		0/1	0/2
Console port	1 x RJ45 console port			
USB port	1 x USB		2 x USB	1 x USB
Memory	4 GB			
TPM	Supported only by the NetEngine AR6710-L26T2X4-T	Supported only by the NetEngine AR6710-L50T2X4-T	Supported only by the NetEngine AR6710-L8T3TS1X2-T	Not supported

Specifications	NetEngine AR6710-L26T2X4 NetEngine AR6710-L26T2X4-T	NetEngine AR6710-L50T2X4 NetEngine AR6710-L50T2X4-T	NetEngine AR6710-L8T3TS1X2 NetEngine AR6710-L8T3TS1X2-T	NetEngine AR6710-L14T2X4
----------------	--	--	--	--------------------------

*: Scenario where the SD-WAN IPsec performance specification applies: IPsec. This specification applies to the combined total of traffic in inbound and outbound directions. Manual switching to the routing mode is required.

** : Scenario where the typical SD-WAN performance specification applies: IPsec + QoS + SA + AppFlow. This specification applies to the combined total of traffic in inbound and outbound directions.. Manual switching to the routing mode is required.

***: By default, a maximum of 32 APs can be managed for free. If the number of APs exceeds 32, licenses must be purchased.

NetEngine AR6710-L series supports a maximum of 128 APs.

****: The maximum number of slots includes the number of combined slots.

Dimensions and Weight

Dimensions without packaging (excluding the parts protruding from the body) (H x W x D)	44.4 mm x 442.0 mm x 420 mm	44.4 mm x 442.0 mm x 420 mm	44.4 mm x 442.0 mm x 220.4 mm	43.6 mm x 442.0 mm x 420 mm
Dimensions without packaging (the depth is the distance from ports on the front panel to the handle on the rear panel) (H x W x D)	44.4 mm x 442.0 mm x 442.5 mm	44.4 mm x 442.0 mm x 442.5 mm	44.4 mm x 442.0 mm x 225.2 mm	43.6 mm x 442.0 mm x 420 mm
Dimensions with packaging (H x W x D)	185 mm x 550 mm x 650 mm	185 mm x 550 mm x 650 mm	90 mm x 570 mm x 390 mm	175 mm x 550 mm x 710 mm
Installation type	Rack	Rack	Rack	Rack
Occupied rack space	1 U	1 U	1 U	1 U

Power Specifications, Power Consumption, and Heat Dissipation

Rated input voltage (V)	AC: 100 V to 240 V, 50 Hz/60 Hz DC: -48 V to -60 V	AC: 100 V to 240 V, 50 Hz/60 Hz DC: -48 V to -60 V	AC: 100 V to 240 V, 50 Hz/60 Hz	AC: 100 V to 240 V, 50 Hz/60 Hz
Input voltage range (V)	AC: 90 V to 264 V, 47 Hz to 63 Hz DC: -38.4 V to -72 V	AC: 90 V to 264 V, 47 Hz to 63 Hz DC: -38.4 V to -72 V	AC: 90 V to 264 V, 47 Hz to 63 Hz	AC: 90 V to 264 V, 45 Hz to 65 Hz
Maximum input current (A)	AC: 3 A AC: 2.5 A	AC: 3 A AC: 2.5 A	AC: 2 A	AC: 3 A

Specifications	NetEngine AR6710-L26T2X4 NetEngine AR6710-L26T2X4-T	NetEngine AR6710-L50T2X4 NetEngine AR6710-L50T2X4-T	NetEngine AR6710-L8T3TS1X2 NetEngine AR6710-L8T3TS1X2-T	NetEngine AR6710-L14T2X4
Maximum output power (W)	AC: 350 W DC: 240 W	AC: 350 W DC: 240 W	AC: 70 W	AC: 150 W
Typical power consumption (W)	68 W	83 W	27 W	41 W
Maximum power consumption (W)	98 W	115 W	33 W	52 W
Power supply redundancy	Dual power supplies, hot-swappable	Dual power supplies, hot-swappable	N/A	Dual power supplies, not hot-swappable
Fan modules	Built-in unpluggable fans	Built-in unpluggable fans	Built-in unpluggable fans	Built-in unpluggable fans
Airflow	Left-to-right	Left-to-right	Left-to-right	Left-to-right
Noise	57.2 dB(A)	57.2 dB(A)	45.3 dB(A)	57.2 dB(A)
Environment Parameters				
Operating temperature	0°C to 45°C	0°C to 45°C	0°C to 45°C	0°C to 45°C
Operating humidity	5% to 95% (non-condensing)	5% to 95% (non-condensing)	5% to 95% (non-condensing)	5% to 95% (non-condensing)
Operating altitude	< 5000 m	< 5000 m	< 5000 m	< 5000 m
Storage temperature	-40°C to +70°C	-40°C to +70°C	-40°C to +70°C	-40°C to +70°C

Software Features and Protocols

Item	NetEngine AR6710-L Series
Basic function	DHCPv4 Server/Client/Relay, DHCPv6 Server/Client/Relay, PPPoE client, NAT, and sub-interface management, DNS
LAN	IEEE 802.1p, IEEE 802.1Q, VLAN management, VLAN aggregation, Voice VLAN, MAC management, STP/RSTP, MSTP
IPv4 unicast routing	Routing policies, static routes, RIP, OSPF, IS-IS, BGP, IP FRR
IPv6 unicast routing	Static routing, routing policies, RIPng, OSPFv3, IS-ISv6, BGP4+
Basic IPv6 function	IPv6 ND, Path PMTU, IPv6 FIB, IPv6 ACL, ICMPv6, DNSv6, DHCPv6, PPPoE client IPv6, IPv4 over IPv6, IPv6 over IPv4

Item	NetEngine AR6710-L Series
VPN	GRE, Ethernet over GRE, IPsec v4/v6, Segment Routing IPv6 (SRv6), L2TP client, DSVPN, IPv4/IPv6 dual-stack, SD-WAN EVPN
WAN optimization	A-FEC and data compression
Multicast	IGMP V1/V2/V3, PIM SM, PIM DM, MSDP, MBGP, IP multicast over SD-WAN
MPLS	MPLS LDP, MPLS L3VPN, Dynamic LSP, IP FRR, LDP FRR, MPLS 6VPE, MPLS 6PE
QoS	Priority mapping, traffic policing (CAR), traffic shaping, congestion avoidance, congestion management, MQC (traffic classifier, traffic behavior, and traffic policy), level-3 traffic scheduling and shaping (HQoS), application identification, intelligent policy-based routing (SPR), SaaS routing, Intelligent Traffic Policing(ITP)
Security	ACL/ACL6, firewall, AAA authentication, RADIUS, HWTACACS, NAC, PKI, broadcast storm suppression, ARP security, ICMP security, attack defense, URPF, CPCAR, attack source tracing, 802.1X authentication, portal authentication, port security, integrates NGFW capabilities, offering security policy control based on IP address (groups)/regions/domain groups/users (groups)/applications/time ranges, ASPF, application recognition and control, IPS, URL filtering, Antivirus and SSL-encrypted traffic detection, signature database and antivirus database update, and interconnection with third-party SSE security clouds,MACsec*
System management	Upgrade management, device management, SNMP (v1/v2c/v3), RMON, NTP, USB-, DHCP option-, and email-based deployment, deployment through the registration query center, NETCONF/YANG/telemetry, TCP FPM, NQA, IFIT, NetStream/NetStream v6, switch RU plug-and-play, web-based management, LLDP for an RU, Event Versus Action(EVA)
WAC	<ul style="list-style-type: none"> •Management of Wi-Fi 5/6/7 Fit APs •CAPWAP protocol •WLAN user management •WLAN radio management •WLAN QoS •WLAN security •WLAN user roaming <p>Supports 802.11k and 802.11v smart roaming, 802.11r fast roaming (≤ 50 ms) and AI roaming</p>

*: The MACsec function requires the SIC-2X2S-V2 card.

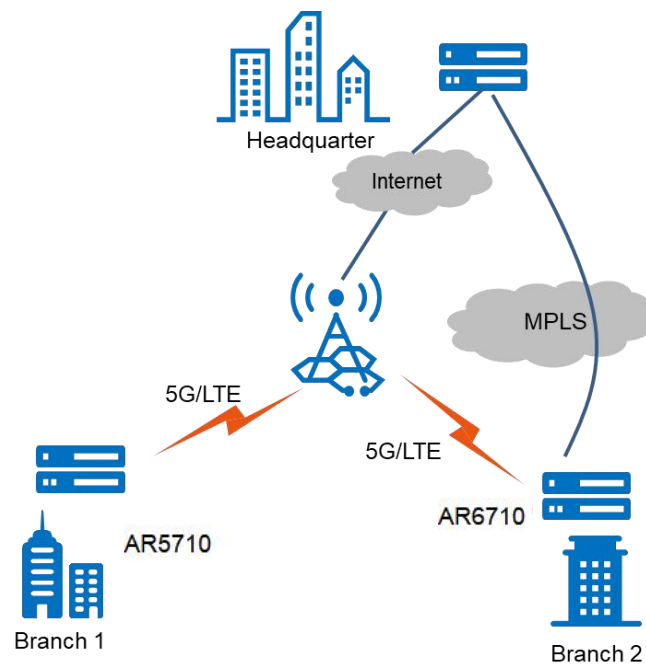
Safety and Regulatory Standards

Item	NetEngine AR6710-L Series
EMC standards compliance	<ul style="list-style-type: none"> •EN 55032 •EN 55035 •CISPR 32 •CISPR 35

Item	NetEngine AR6710-L Series
	<ul style="list-style-type: none"> •IEC/EN 61000-3-2 •EN 61000-3-3 •ETSI EN 300 386 •ETSI EN 301 489-1 •ETSI EN 301 489-3 •ETSI EN 301 489-17 •ETSI EN 301 489-52 •FCC CFR Part 15, Subpart B •ANSI C63.4 •ICES-003 Issue 7 •EN 50121-1 •EN 50121-4 •GB 9254
Environmental standards compliance	<ul style="list-style-type: none"> •RoHS •REACH •WEEE
Security standards compliance	<ul style="list-style-type: none"> •IEC 60950-1 •IEC 62368-1 •EN 60950-1 •UL 60950-1 •CSA C22.2 No 60950-1 •GB 4943.1

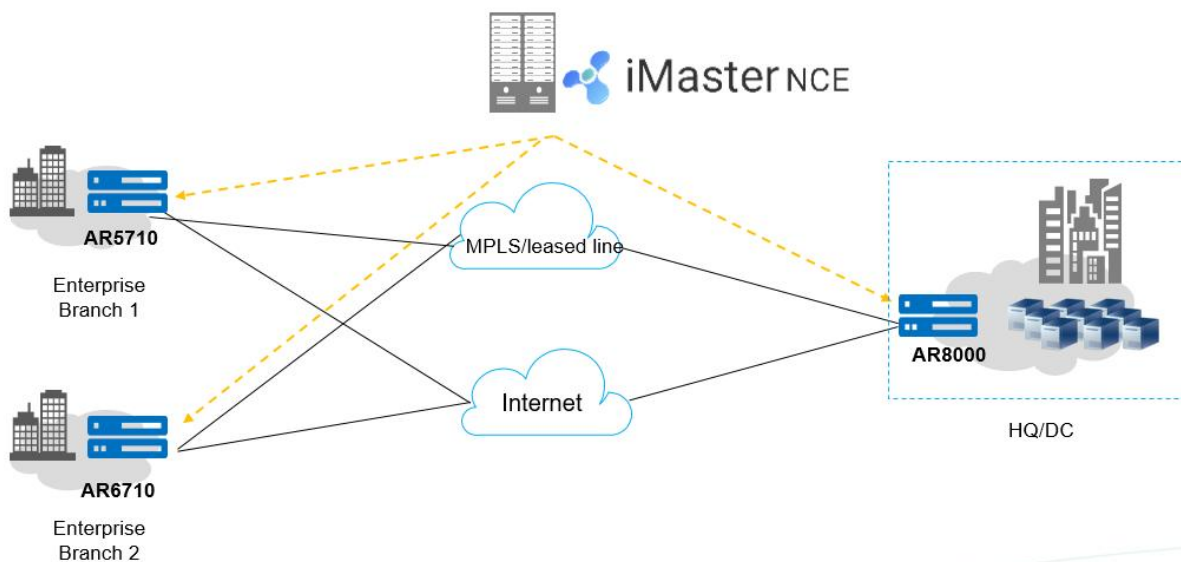
Application Scenarios

Networking diagram for branch 5G/LTE wireless access



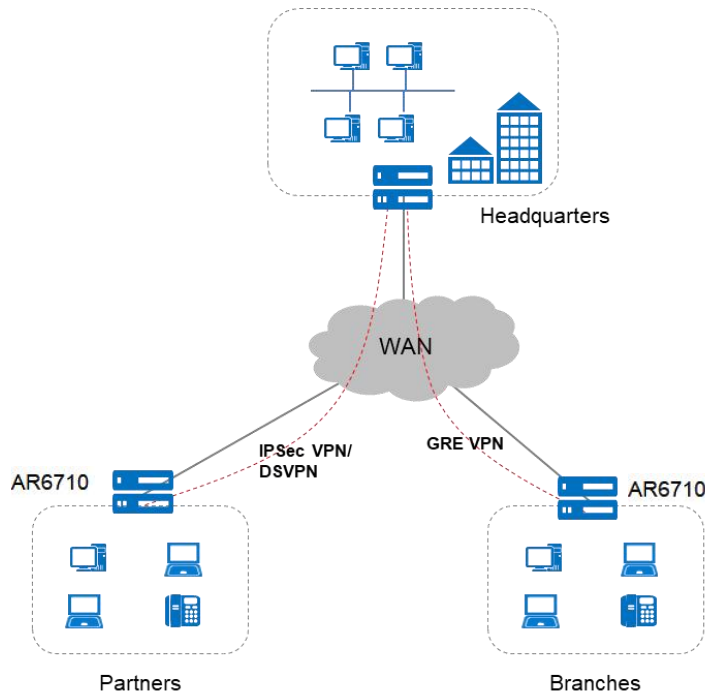
Huawei NetEngine AR6710-L series routers feature 5G/LTE functionality, enabling wireless interconnection between enterprise branches and between the headquarters and branches. A 5G/LTE link can function as the active link or as a backup for wired links, enhancing network stability while reducing network construction cost.

SD-WAN networking



In the SD-WAN Solution, Huawei NetEngine AR6710-L series routers can serve as gateways for the headquarters and branches of small or midsize enterprises and support multiple physical links such as MPLS private lines and Internet links. Additionally, they can be managed and visualized on iMaster NCE in a unified manner. The AR6710-L series provides extensive SD-WAN features such as intelligent application identification and intelligent traffic steering to deliver better service experience to enterprises. For details about Huawei SD-WAN Solution, visit

Networking diagram in the VPN scenario



Build different types of VPNs through the Internet

Huawei NetEngine AR6710-L series routers offer a range of secure access features that enable communication between enterprise branches and headquarters, as well as allowing partners to access enterprise resources. Secure tunnels such as GRE VPN, IPsec VPN, DSVPN, and L2TP VPN tunnels can be set up between the headquarters and branches for secure data access and transmission. The AR6710-L series supports quick tunnel deployment and authentication for branches. Furthermore, authenticated and authorized partners can remotely access the enterprise resources over these tunnels.

Ordering Information

The configuration of the NetEngine AR6710-L series includes device model selection and software configuration.

- Device model

Select the device model according to the uplink interface type and service requirements.

- Software

The NetEngine AR6710-L series software consists of the basic software and licensed software. The basic software provides basic features such as routing, switching, and security, while the licensed software provides additional functions, such as security protection.

Host	Ordering Information
NetEngine AR6710-L8T3TS1X2	AR6710-L8T3TS1X2, 2*GE combo WAN, 1*10GE(SFP+) WAN, 8*GE LAN, 1*GE combo LAN, 2*USB 2.0, 2*SIC
NetEngine AR6710-L8T3TS1X2-T	AR6710-L8T3TS1X2-T, 2*GE combo WAN, 1*10GE(SFP+) WAN, 8*GE LAN, 1*GE combo LAN, 2*USB 2.0, 2*SIC

NetEngine AR6710-L14T2X4	AR6710-L14T2X4, 2*10GE SFP+ WAN,2*GE Copper WAN,4*GE Combo LAN,8*GE Copper LAN,1*USB2.0
NetEngine AR6710-L26T2X4	AR6710-L26T2X4, 2*10GE(SFP+), 26*GE Copper,1*USB3.0,4*SIC
NetEngine AR6710-L26T2X4-T	AR6710-L26T2X4-T, 2*10GE(SFP+), 26*GE Copper,1*USB3.0,4*SIC
NetEngine AR6710-L50T2X4	AR6710-L50T2X4, 2*10GE(SFP+), 50*GE Copper,1*USB3.0,4*SIC
NetEngine AR6710-L50T2X4-T	AR6710-L50T2X4-T, 2*10GE(SFP+), 50*GE Copper,1*USB3.0,4*SIC

Software sales model	License	Ordering Information
Threat protection service	LAR0TP1301	Threat Protection Service Subscribe x Year (Applies to AR6700) (corresponding model: LAR0TP130x), including: <ul style="list-style-type: none"> • IPS signature database update • URL remote query for URL filtering • Antivirus signature database update
	LAR0TP1302	
	LAR0TP1303	
	LAR0TP1304	
	LAR0TP1305	
Independent Sale Model	AR67-L-LIC-Basic-IFIT	AR6700-L Value-added Basic IFIT Package
	AR67-L-LIC-Enhance-IFIT	AR6700-L Value-added Enhanced IFIT Package
	AR67-L-LIC-Enh-WANOP	AR6700-L Value-added Enhanced WAN-Optimize Package, including: <ul style="list-style-type: none"> • Data Compression
	AR67-L-LIC-NETCONN	AR6700-L Value-added Network Connection Package, including: <ul style="list-style-type: none"> • DSVPN
N1 Model (NCE-Campus)	N1-AR67-L-B	N1 AR6700-L CloudCampus Basic Software (exclude SD-WAN), Per Device
	N1-AR67-L-F	N1 AR6700-L CloudCampus Foundation (include SD-WAN), Per Device
	N1-AR67-L-A	N1 AR6700-L CloudCampus Advanced (include SD-WAN), Per Device

Other Information

SIC Port Model	Ordering Information
SIC-4E1-V2	4-port channelized E1 interface card
SIC-4GET-V2	4-port GE LAN/WAN interface card
SIC-4STM1-V2	4-port 155M Packet over SDH/Sonet optical interface card
SIC-NRGL-V2	5G NR/LTE Interface Card
1V35B-V2*	4-Port VDSL2 WAN Interface Card
SIC-2X2S-V2	2-Port 10GE SFP+, 2-Port GE SFP Interface Card
SIC-4CSTM1-V2	4-port channelized POS interface card

* : Only PTM mode is supported.

WSIC Port Model	Ordering Information
WSIC-4GE-C-V2	4-port GE combo LAN/WAN interface card
5G RU	Frequency Band
NetEngine AR5710I-RU-NRGL	<ul style="list-style-type: none"> •5G NR SA: Band 1/3/5/7/8/20/28/38/40/41/75/77/78/79/80/81/82/83/84 •5G NR NSA: Band 1/3/5/7/8/20/28/38/40/41/77/78/79 •LTE FDD: Band 1/3/5/7/8/18/19/20/26/28/32 •LTE TDD: Band 34/38/39/40/41/42/43 •DL MIMO: <ul style="list-style-type: none"> 5G 4x4: NR Band 1/3/7/38/40/41/77/78/79 5G 2x2: NR Band 5/8/20/28/75 LTE 4x4: Band 1/3/7/38/39/40/41/42/43 LTE 2x2: Band 5/8/18/19/20/26/28/32/34 •UL MIMO: <ul style="list-style-type: none"> 5G 2x2: NR Band1/38/40/41/77/78/79 <p>Supported Rates:</p> <ul style="list-style-type: none"> •5G SA: Theoretical uplink peak of 500 Mbps, theoretical downlink peak of 5.4 Gbps •5G NSA: Theoretical uplink peak of 125 Mbps, theoretical downlink peak of 3.6 Gbps
Switch RU	Model
Switch RU	CloudEngine S5731-L series, CloudEngine S5731S-L series, CloudEngine S5731I-L series, CloudEngine S5751-L series

More Information


For more information, visit <https://e.huawei.com/en/> or contact us in the following ways:

- Global service hotline: <http://e.huawei.com/en/service-hotline>
- Logging in to the Huawei Enterprise technical support website: <http://support.huawei.com/enterprise/>
- Sending an email to the customer service mailbox: support_e@huawei.com

Copyright © Huawei Technologies Co., Ltd. 2021. All rights reserved.

No part of this document may be reproduced or transmitted in any form or by any means without prior written consent of Huawei Technologies Co., Ltd.

Trademarks and Permissions

 HUAWEI and other Huawei trademarks are trademarks of Huawei Technologies Co., Ltd.

All other trademarks and trade names mentioned in this document are the property of their respective holders.

Notice

The purchased products, services and features are stipulated by the contract made between Huawei and the customer. All or part of the products, services and features described in this document may not be within the purchase scope or the usage scope. Unless otherwise specified in the contract, all statements, information, and recommendations in this document are provided "AS IS" without warranties, guarantees or representations of any kind, either express or implied.

The information in this document is subject to change without notice. Every effort has been made in the preparation of this document to ensure accuracy of the contents, but all statements, information, and recommendations in this document do not constitute a warranty of any kind, express or implied.

Huawei Technologies Co., Ltd.

Address: Huawei Industrial Base Bantian,
Longgang Shenzhen 518129 People's
Republic of China

Website: www.huawei.com